

From Cell to Excel: we do it all.

CELLCentral is Western Australia's first integrated histology and biological imaging lab and is housed in the School of Anatomy & Human Biology at UWA.

CELLCentral offers you a range of state-of-the art histology, biological preparation, imaging and analysis, equipment and services. We can assist you with every stage of the research process, from cell and tissue processing and preparation, right through to the analysis of results and/or production of images for presentation and web publication. There is no longer any need to deal with multiple labs.

We provide facilities and other related services for universities, emerging biotech communities and industry requiring teaching materials/aids, cutting-edge multimedia, graphics, image acquisition and analysis. CELLCentral serves both the experienced and new investigator.

We provide training and support for all of those in need. So whatever the needs of your research and/or teaching, with CELLCentral you can predict the highest quality outcome.



CELLCENTRAL
SCHOOL OF ANATOMY & HUMAN BIOLOGY



CELLCENTRAL presentation • web services



CELLCentral provides a wide range of desktop publishing services mostly in the bio medical fields such as: scientific posters, presentations, web sites and brochures.

We have the expertise to provide quality design and layout, and are well acquainted with techniques that integrate images with text to enhance clarity of information.

By combining our abilities in the area of graphic design with the latest programming technologies, we are able to produce cutting edge web sites that are effective as well as extremely efficient.

Each solution that we supply is treated individually and we always try to produce a graphically strong site as well as fast access times.

Our solutions cover the planning and design, concept of interfaces, database connectivity, digital photography and the development of Internet applications.

Furthermore, CELLCentral maintains a huge database of medical and biological images.

We can supply you with beautiful images and if you wish, even turn them into a work of art.



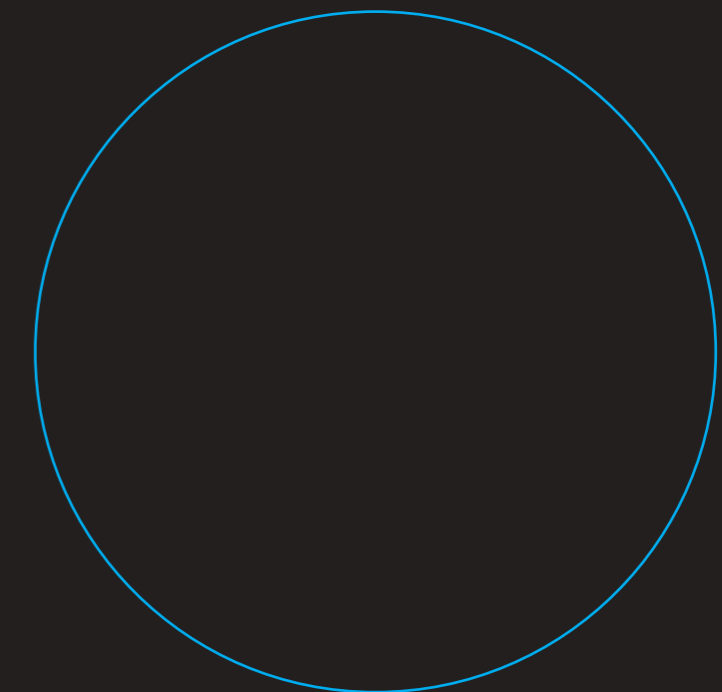
CELLCENTRAL
SCHOOL OF ANATOMY & HUMAN BIOLOGY

Steve Parkinson + 61 8 6488 3889
sparkinson@anhb.uwa.edu.au

Guy Ben-Ary +61 8 6488 8649
guyba@cylene.uwa.edu.au

Fax +61 8 6488 1051 <http://www.cellcentral.uwa.edu.au>

Before your next experiment, put our services under the microscope.



CELLCENTRAL
histology



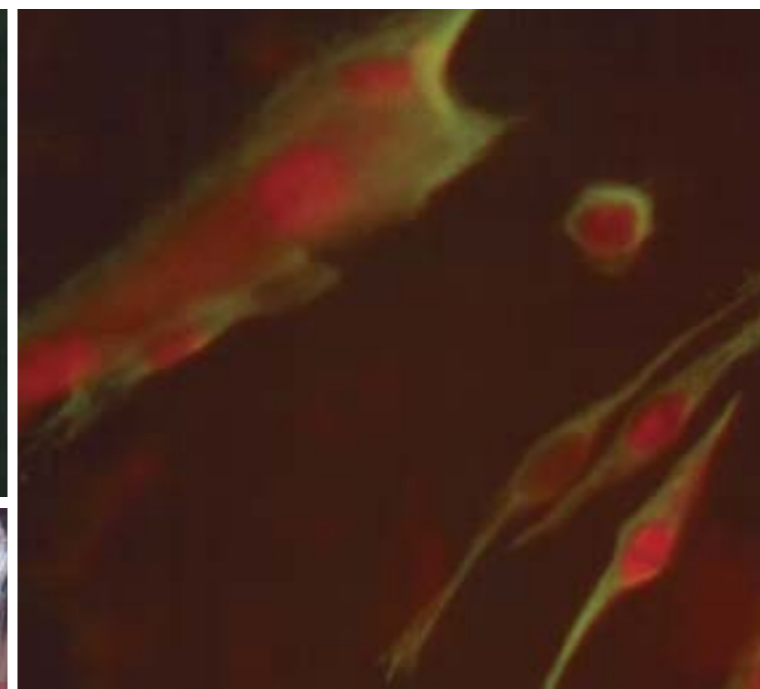
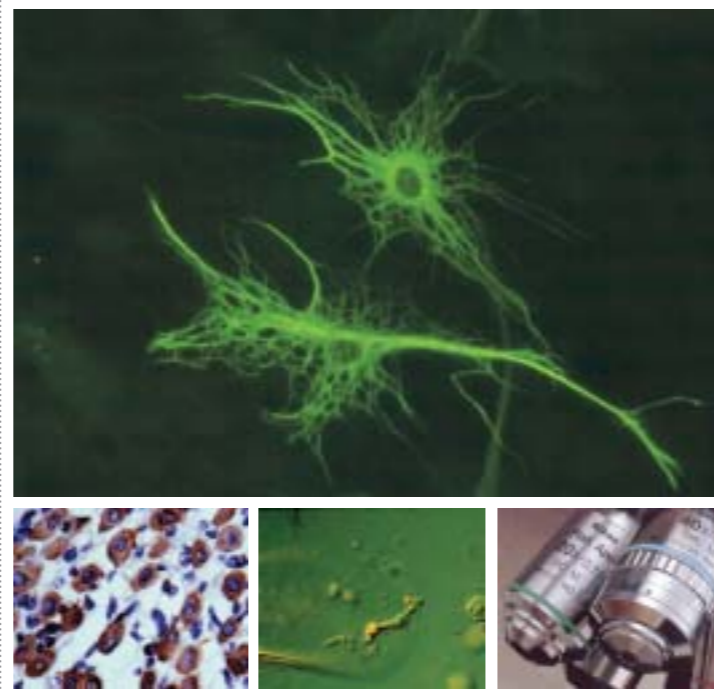
CELLCentral's histology laboratories have built on over 40 years experience in the School of Anatomy & Human Biology, to provide state-of-the-art University teaching and research histology services.

Included in the range of services available are all light and electron microscopy processing, embedding, cutting and staining as well as cryostat

sectioning. Specialist histological expertise is available in areas such as large and thick sectioning, including bone sectioning and the provision of human tissue sections.

Histology slides are produced to order and our equipment is available for your use, with training available in a range of histological techniques.

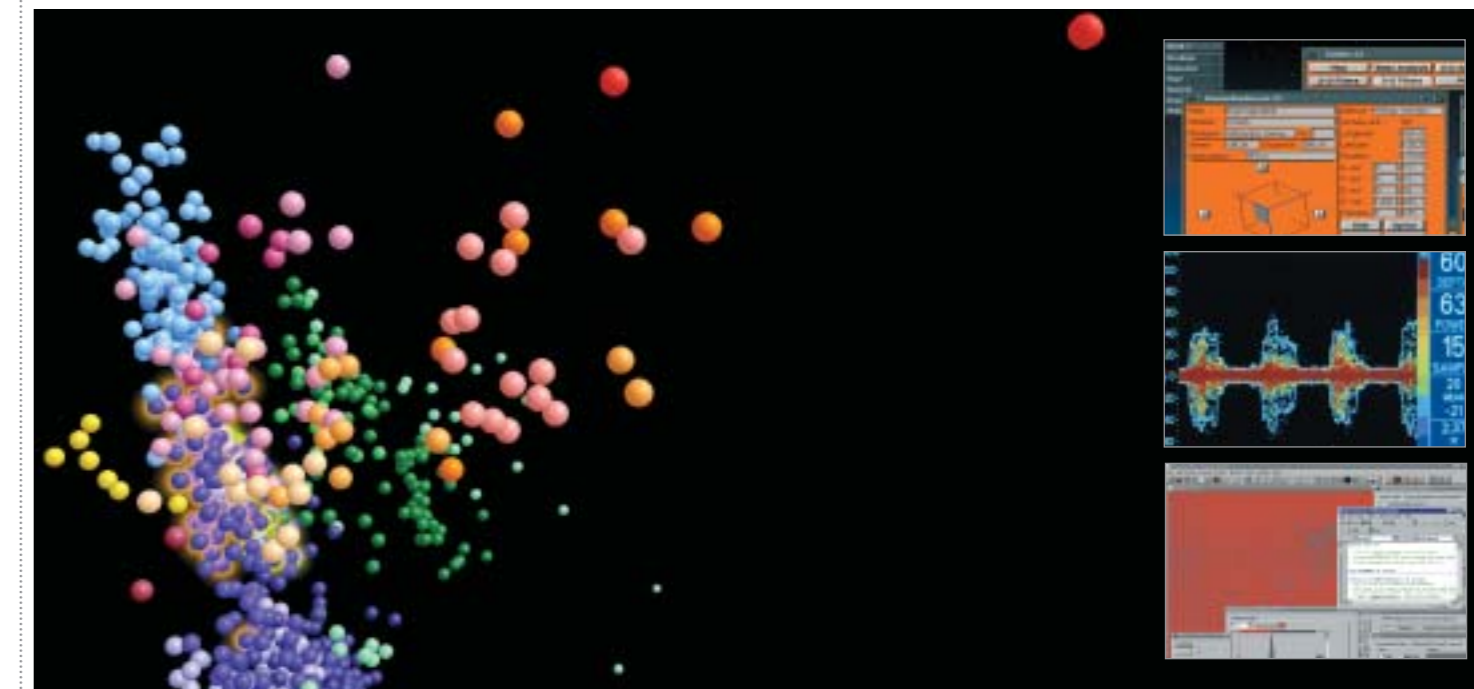
CELLCENTRAL
imaging



CELLCentral is one of the leading imaging facilities of WA. Technically we are set up to acquire high resolution images and video clips from microscopes, EM photographs, 35 mm slides or any other media and live cells and organs. We can input all graphic file formats and are set up to reconstruct images from confocal sections. We have cutting edge inverted and upright microscopes

that support Hoffman, phase, Nomarski and fluorescent microscopy. A wide range of conventional, digital and low light cameras and scanners are available to acquire digital images. Our digitizing suite and live cell imaging stations allow grabbing and editing of living culture time lapse movies or any other kind of video production.

CELLCENTRAL
analysis



CELLCentral offers a wide range of image analysis expertise. Customizing solutions for your analysis problems, in-house expertise or the use of the various image analysis packages in order to help you meet your analysis needs. Our microscopy stations interface to powerful computers

with packages such as: Image Pro Plus, Metamorph, NIH image etc and our motorized stage makes it easy to count and measure cells. Furthermore, video analysis is achievable. We can either do it for you or get you started and train you to analyse your results.

